

2 –

50-

(1).

– 13 %.

– 20 %

sibirica Ledeb.)

(*Pinus sibirica Mair.*)

(*Abies*

(*Picea obovata Ledeb.*),

[1].

– 3680 2720 ./

(*Nucifraga caryocatactes*)

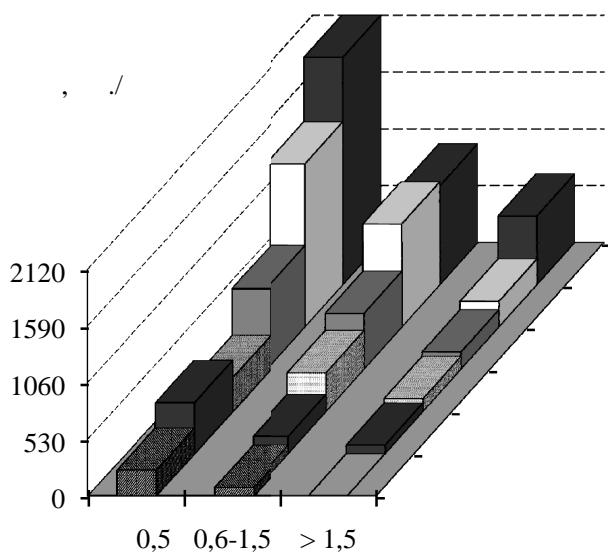
1983-87 .

720 ./

– 56 48%,
3).

– 320 800 ./

40%, (



3 –

1983-87 .

2003

3. . . . , 1961. - 56 .
4. . . . , 2004. - 264 .
5. 1 (5), 2002. - . 46-54. //

574(07)
40

. .
. .